
Social Investment Forum Japan (SIF-Japan)

1 . About SIF-Japan

●Global business environment for corporations

For business corporations, globalization is becoming more and more accelerated and their supply chains are spreading around the world. In order to respond to this trend, the United Nations has established the UN Global Compact, which proves that CSR (Corporate Social Responsibility) is becoming a social requirement for companies. Many companies are now dealing with CSR, beyond merely complying with laws.

●The Role of SRI and its recent development

The concept of SRI (Socially Responsible Investment) has been established in the western countries and is developing rapidly.

Especially in the EU, promoting CSR and SRI is regarded as an important policy for the union and membership countries because of unemployment and other social problems. For instance, EU launched ‘CSR Green Paper’ in 2001. The UK amended its pension laws to support SRI. France made it a requirement for listed companies to disclose non-financial information.

In April 2006, the United Nation launched Principle for Responsible Investment (PRI) and propagates the concept of ESG (Environmental, Social, and Governance) to mainstream investors.

●Background of establishing SIF-Japan

In Japan, an ‘eco fund’ was created in 1999, which is considered the first SRI fund in the country. In 2000, another type of SRI fund was launched which screens employment practices, customer satisfaction, social contributions, as well as environmental considerations.

SIF-Japan was launched in early 2001 in order to promote SRI in Japan. It was aimed to be a neutral organization similar to American or European social investment forums. In 2003, SIF-Japan started preparing to become a Not for Profit Organization (NPO). SIF-Japan received support from some investors, corporations, and financial institutions, and acquired the corporate status of NPO in June 2004.

SIF-Japan offers an interactive space to exchange opinions and learning opportunities for people and institutions that are related or interested in SRI. It also encourages companies to disclose more non-financial information and aims at developing a sound SRI market in Japan.

● Mission and role of SIF-Japan

SIF-Japan's mission is to establish a social norm which supports investing in socially responsible companies, organizations, and projects, which in turn will be able to solve various social problems and develop SRI markets.

The volume of Japanese SRI markets is still a few hundred billion yen, which is extremely smaller than the US (more than two hundred trillion yen) and European (a few ten trillion yen) SRI market. Researching the reason for this discrepancy is one of our responsibilities.

SIF-Japan is also aiming to provide up-to-date information of CSR and SRI in overseas countries.

One of the reasons for Japanese slow development of SRI could be the lack of communication among affected parties such as investors, asset managers, and research agencies. Western SIFs work as a catalyst to encourage that kind of communication and SIF-Japan intends to play a similar role.

2. Summary of activities

1) Purpose of activities

Purpose: Disseminate and develop SRI in Japan

Measures:

- Promote communication among any affected parties such as investors, asset managers, research agencies, companies, and so on.
- Encourage companies to disclose information related to SRI
- Research about SRI
- Research about the evaluation of companies
- Propose and take action by investors

2) Overview of activities

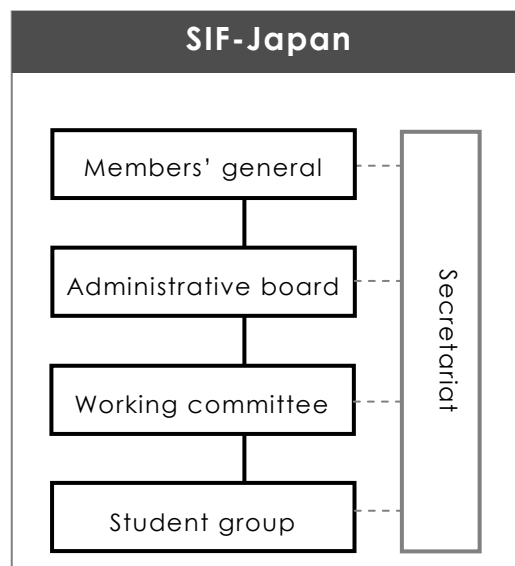
- Seminars and symposiums
- Study groups
- Publish research reports
- E-mail newsletters, website, SRI databases
- Support social venture companies

3. Organizational structure

1) Structure

SIF-Japan consists of a general meeting by all members, administrative board which is selected by the general meeting, working committee which is selected by the administrative board, and a volunteering student group.

Chairperson: Mr. Shinyasu Hoshino
Chief Executive and chief of the secretariat: Mr. Toshihiko Goto



2) Minimum Membership fees

(1) General corporations	¥ 100,000 × 3 = ¥ 300,000
(2) Financial holding company and financial institution except the following	
(3) (4) (5)	¥ 100,000 × 5 = ¥ 500,000
(3) Regional banks	¥ 100,000 × 3 = ¥ 300,000
(4) Investment trust management company, Investment advisory company, Asset management companies, Shinkin Banks	¥ 100,000 × 2 = ¥ 200,000
(5) Credit cooperative	¥ 100,000 × 1 = ¥ 100,000
(6) Public agencies,	¥ 100,000 × 1 = ¥ 100,000
(7) NPO/NGO, Individuals	¥ 10,000 × 1 = ¥ 10,000
(8) Students	¥ 5,000 × 1 = ¥ 5,000

3) Secretariat

- The secretariat supports the operation of the general meeting, administrative board, and working committee

Membership application / contact

NPO Social Investment Forum Japan (SIF-Japan), Secretariat
Shirokane-dai Building 5F, 3-19-6, Shirokane-dai, Minato-ku, Tokyo
108-0071, Japan
EMAIL: contact@sifjapan.org TEL: 81-(0)3-5423-1512 FAX: 81-(0)3-5423-6921